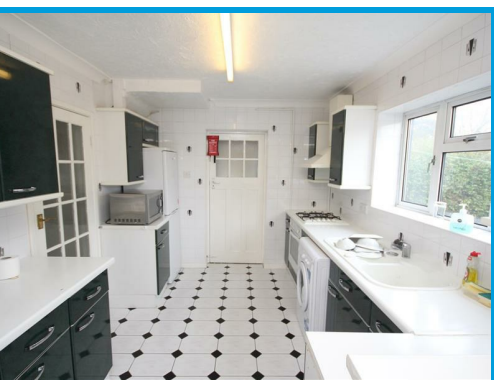




Maple Grove, Guildford Surrey, GU1 1LP

£2,600 PCM

**\*\* STUDENT ACCOMODATION 2026-2027 ACADEMIC YEAR\*\*** This spacious four bedroom semi detached house is presented in good order and is within easy access to Guildford town centre.



# Description

**\*\*GET A £100 NANDOS VOUCHER WHEN YOU RENT THIS PROPERTY THROUGH CAVENDERS\*\*** This spacious four bedroom semi detached house is presented in good order and is within easy access to Guildford town centre. On the ground floor the property comprises of a hallway with access to large reception room/ bedroom four, large kitchen overlooking the garden and further reception room with access to rear enclosed garden. The first floor offers family bathroom suite with shower, two double bedrooms with built in wardrobes and a further single bedroom. The property further benefits off street parking and a good size garden with patio.

